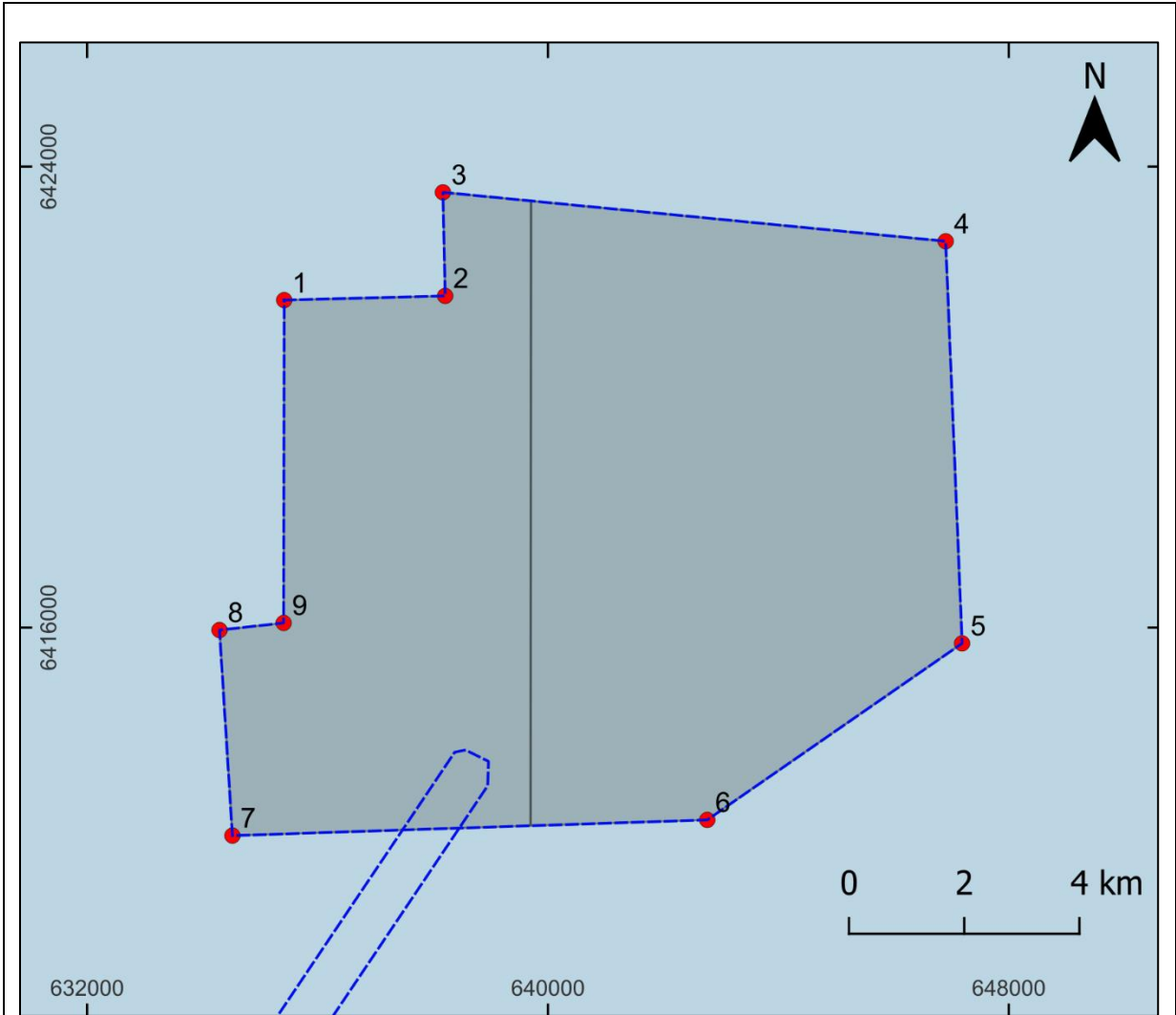
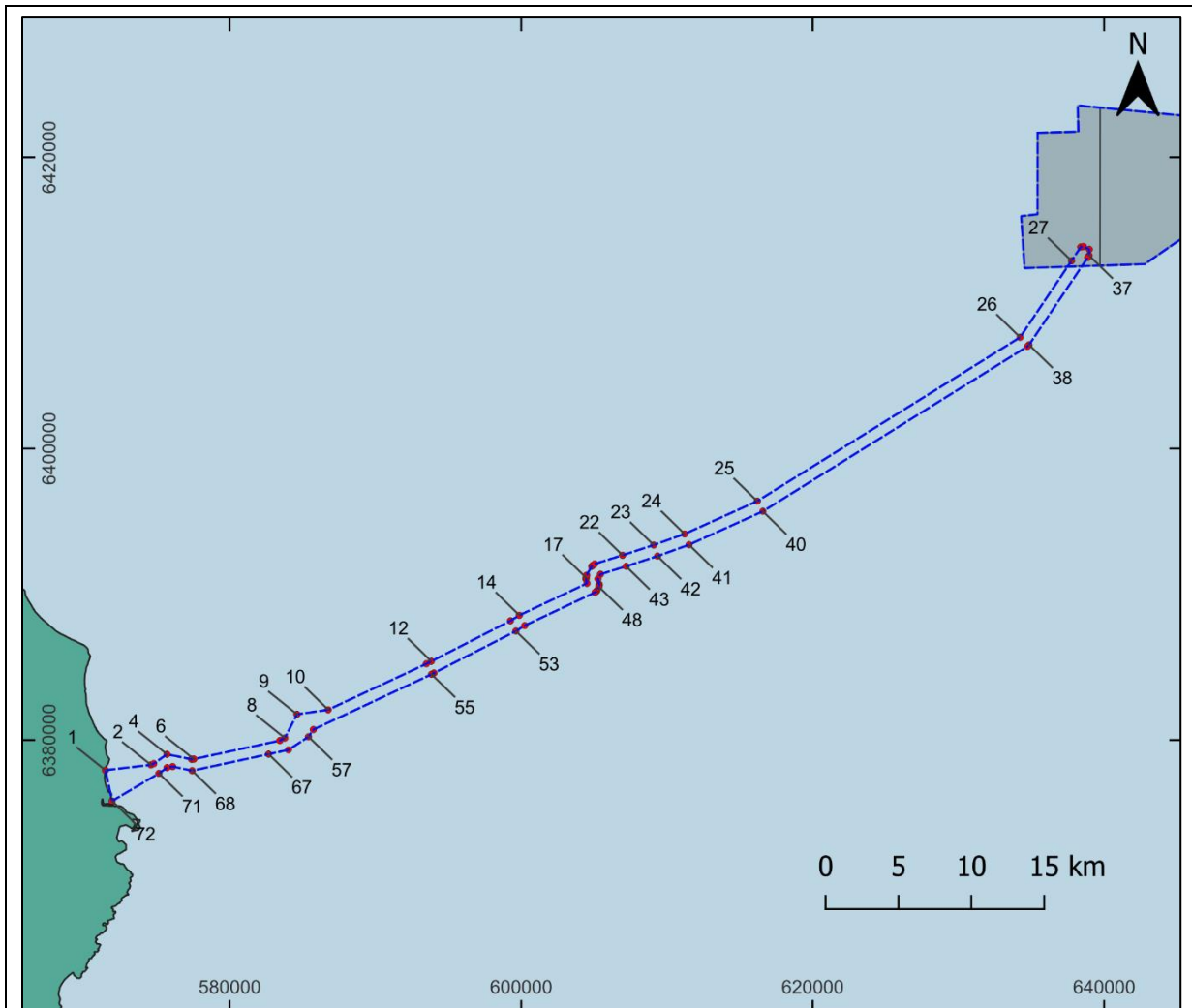


NOTICE TO MARINERS	
NtM Number:	Rovco_GV_001
Date of Issue:	11/07/2024
1. Planned Activity:	
<p>This Notice is to inform that Rovco intend to acquire towed geophysical, geotechnical and environmental data on the Glomar Supporter. The chosen worksite, in agreement with the field owner, is the Green Volt Offshore Wind Farm and Export Cable Corridor which is located ~4-80 km from the east coast of Peterhead, NE Scotland.</p> <p>Acquisition will include:</p> <ul style="list-style-type: none"> • Non-intrusive and intrusive survey activity in open water • ~34 days offshore activity (Q3 2024) • Collection of Multi Beam Echo Sounder (MBES) data – Hull mounted sensor • Collection of Sub Bottom Profile (SBP) data – Hull mounted sensor • Collection of Side Scan Sonar (SSS) data – Towed sensor • Collection of 2DUHR (seismic) data – Towed Sensor • Collection of TVG (Magnetometer) data – Towed Sensor • Collection of Geotechnical data • Collection of Environmental grab sampling <p>The vessel, Glomar Supporter, will operate on a 24-hour basis and display the appropriate shapes (mast head signals visually indicating the status of the vessel to other vessels on navigable waters during daylight hours) and lights at all times during operations.</p> <p>Please contact the Fisheries Liaison Officer in Section 7 if you feel the survey affects you and you have not been previously contacted.</p> <p>An Offshore Fisheries Liaison Officer will be onboard the survey vessel to provide advice to the survey contractors and facilitate liaison with the fishing industry.</p>	
2. Geographic Coordinates and Chart of Survey Area:	
<i>(All positions quoted in: latitude / longitude – in decimal, degrees, minutes)</i>	
The blue dashed line areas will be the predominant location for planned activity.	



Node ID	Easting (UTM 30N)	Northing (UTM 30N)	latitude	Longitude
1	635421.6	6421685.062	57°54'58.810223" N	000°42'50.489457" W
2	638216.5	6421757.817	57°54'58.075073" N	000°40'0.648285" W
3	638178.2	6423555.842	57°55'56.21013" N	000°39'59.204933" W
4	646907	6422706.462	57°55'18.724609" N	000°31'10.968201" W
5	647192	6415727.193	57°51'32.916929" N	000°31'9.211793" W
6	642767.4	6412663.117	57°49'59.088913" N	000°35'44.001609" W
7	634522.9	6412390.182	57°49'59.465015" N	000°44'3.958369" W



Node ID	Easting (UTM 30N)	Northing (UTM 30N)	latitude	Longitude
1	571465.261	6377932.489	57°32'17.710052" N	001°48'22.50963" W
2	574587.959	6378300.658	57°32'27.799182" N	001°45'14.372809" W
3	574785.221	6378384.165	57°32'30.381771" N	001°45'2.420546" W
4	575688.794	6379025.901	57°32'50.588204" N	001°44'7.376025" W
5	577375.999	6378682.067	57°32'38.444805" N	001°42'26.314769" W
6	577533.911	6378693.3	57°32'38.710655" N	001°42'16.807225" W
7	583436.547	6379967.03	57°33'16.108487" N	001°36'20.342362" W
8	583777.038	6380145.141	57°33'21.639896" N	001°35'59.643981" W
9	584613.236	6381772.594	57°34'13.691481" N	001°35'7.312401" W
10	586752.764	6382083.85	57°34'22.293619" N	001°32'58.185128" W
11	593488.157	6385235.444	57°35'59.336162" N	001°26'8.563662" W
12	593826.443	6385408.547	57°36'4.679174" N	001°25'47.953882" W
13	599252.043	6388184.841	57°37'30.243473" N	001°20'17.176235" W
14	599867.409	6388567.745	57°37'42.131369" N	001°19'39.531651" W
15	604507.983	6390759.952	57°38'49.203541" N	001°14'56.511638" W

16	604439.169	6391051.026	57°38'58.669088" N	001°15'0.207121" W
17	604443.925	6391143.954	57°39'1.668749" N	001°14'59.775782" W
18	604483.955	6391320.012	57°39'7.325907" N	001°14'57.088298" W
19	604825.44	6391921.163	57°39'26.470798" N	001°14'35.560352" W
20	604898.384	6391994.313	57°39'28.77403" N	001°14'31.0474" W
21	605040.259	6392093.825	57°39'31.87145" N	001°14'22.336284" W
22	606944.503	6392687.272	57°39'49.439676" N	001°12'26.560032" W
23	609084.629	6393385.771	57°40'10.168158" N	001°10'16.354596" W
24	611204.678	6394147.838	57°40'32.931512" N	001°8'7.214276" W
25	616184.805	6396397.801	57°41'41.119381" N	001°3'2.883373" W
26	634220.105	6407643.292	57°47'26.414523" N	001°44'31.895454" W
27	637748.366	6412893.707	57°50'12.201811" N	001°40'47.536287" W
	638382.489	6413838.658	57°50'42.028321" N	001°40'7.149217" W
35	638570.729	6413875.87	57°50'43.020846" N	001°39'55.665543" W
36	638969.349	6413679.292	57°50'36.224412" N	001°39'31.92452" W
37	638955.105	6413256.433	57°50'22.578098" N	001°39'33.67412" W
	638863.389	6413119.926	57°50'18.270161" N	001°39'39.516495" W
38	634835.938	6407125.57	57°47'9.021023" N	001°43'55.684752" W
39	634726.406	6407016.445	57°47'5.613597" N	001°44'2.531984" W
40	616573.806	6395697.851	57°41'18.136065" N	001°2'40.623856" W
41	611507.985	6393407.231	57°40'8.725147" N	001°7'50.14875" W
42	609342.942	6392628.577	57°39'45.469712" N	001°10'2.008459" W
43	607189.701	6391925.768	57°39'24.617114" N	001°12'12.989129" W
44	605436.206	6391384.085	57°39'8.598434" N	001°13'59.574912" W
45	605255.175	6391064.47	57°38'58.42023" N	001°14'10.990925" W
46	605347.467	6390700.135	57°38'46.56662" N	001°14'5.998654" W
47	605350.033	6390621.764	57°38'44.031364" N	001°14'5.966951" W
48	605329.661	6390519.349	57°38'40.738258" N	001°14'7.355664" W
49	605187.288	6390259.124	57°38'32.446965" N	001°14'16.345475" W
50	605137.543	6390198.509	57°38'30.529545" N	001°14'19.438788" W
51	605054.7	6390134.942	57°38'28.544458" N	001°14'24.531573" W
52	600236.562	6387857.422	57°37'18.876502" N	001°19'18.347391" W
53	599631.871	6387480.547	57°37'7.176715" N	001°19'55.335159" W
54	594010.059	6384603.898	57°35'38.531182" N	001°25'38.020913" W
55	593840.995	6384517.389	57°35'35.861321" N	001°25'48.319331" W
56	585738.386	6380725.96	57°33'39.093208" N	001°34'0.945719" W
57	585402.989	6380230.663	57°33'23.309909" N	001°34'21.746547" W
	584024.984	6379326.622	57°32'55.013251" N	001°35'45.749842" W
67	582667.17	6379033.649	57°32'46.44242" N	001°37'7.755846" W

68	577418.623	6377901.179	57°32'13.172827" N	001°42'24.646237" W
69	576085.541	6378182.315	57°32'23.075691" N	001°43'44.468331" W
70	575695.483	6378110.743	57°32'20.997242" N	001°44'7.998722" W
71	575140.415	6377716.522	57°32'8.585055" N	001°44'41.807051" W
72	571932.75	6375824.486	57°31'9.290215" N	001°47'56.646036" W

3. Restrictions & Exclusion Zones:

Recommended 1500m radius exclusions zone about Glomar Supporter at all times due to towed equipment. Bridge can be contacted via standard marine VHF channels/protocol as required.

4. Survey Dates:

Survey Area:	Green Volt Offshore Wind Farm & Export Cable Corridor Areas		
Estimated Start Date:	17 th July 2024	Estimated End Date:	21 st August 2024

5. Vessel Details:

Vessel Name:	GLOMAR SUPPORTER		
Vessel Type / LOA(m):	60m	Vessel Function:	Survey
Vessel Call Sign:	HOAL	MMSI:	374689000



6. Project Contact Details:	
Rovco Project Manager (Name):	Rhys Parr
Contact Number:	+44 7920 884 225
Contact Email:	rhys.parr@rovco.com
7. Project Contact Details:	
Offshore Fisheries Liaison Officer (Name):	John Watt
Contact Number:	+44 7590 880 746
Contact Email:	John.watt@brownmay.com
8. Project Contact Details:	
Glomar Supporter Offshore Manager (Name):	Offshore Manager
Contact Number:	SAT: +881 677 131 115 / Mobile: +31 628 12049
Contact Email:	omglomarsupporter@offshorerovco.com

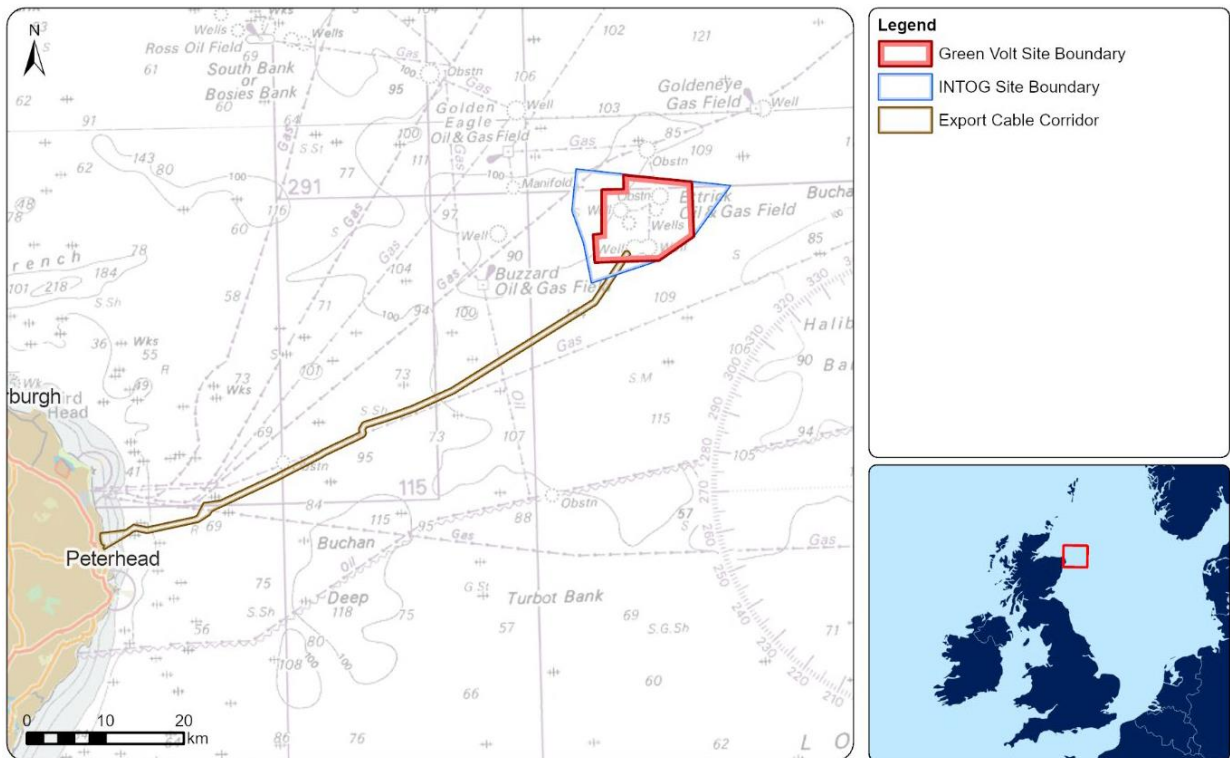


Figure 1: Green Volt Wind Farm Area